

# MCA 1.5ns



MCA RealSubs®  
Q

355nm 266nm

1064nm 532nm

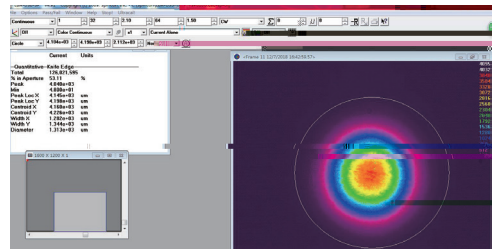
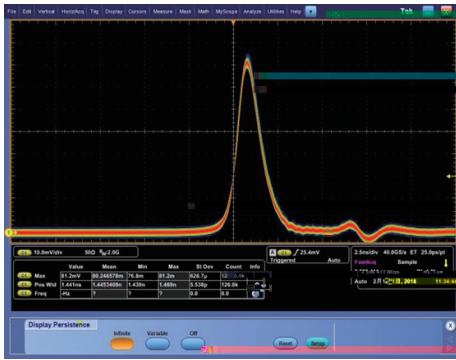
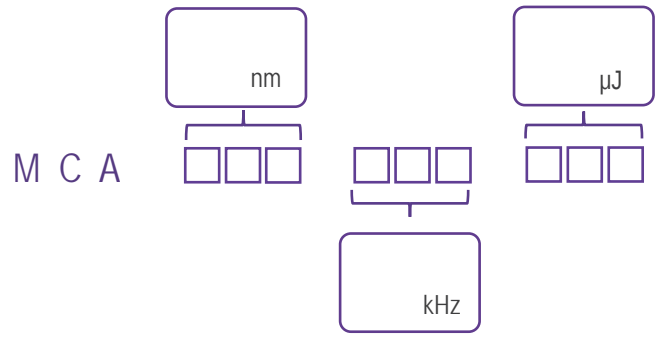
1.2ns  
120μJ  
20kHz  
TEM<sub>00</sub>

## 光学参数

(nm)	1064				532				355				266			
(kHz)	1	5	10	20	1	5	10	20	1*	5*	10*	20*	1*	5*	10*	20*
(mW)	120	300	400	400	60	150	150	200	30	50	50	60	10	40	30	40
( J)	120	60	40	20	60	30	15	10	30	10	5	3	10	8	3	2
(ps)	2000		1500		1500		1200		1500		1200		1500		1200	
(8h)	±3%															
	TEM <sub>00</sub>															
Typ.(mrad)	@1/e <sup>2</sup>	8			6			5			5					
	@1/e <sup>2</sup>	8			6			5			5					
	>100:1															

## 系统参数

	100-240 VAC 50/60 Hz	
	RS232	USB
(W)	35	
(W×H×L,mm)	168×88×140	
(W×H×L,mm)	45×30×120	
( )	15~35	
( )	0~60	



nm

